

MITEL
**Express
Messenger™**



Affordable Voice Mail for
Small Business and Hotels



MITEL Express Messenger

Mitel Express Messenger answers the need for a low-cost voice mail solution with high-performance voice mail features.



Affordable Voice Mail for Small Business and Hotels

Business

Mitel Express Messenger provides small businesses with all the voice mail and auto-attendant features they need – without the high price. Flexible and scalable with a capacity of two to eight ports, Mitel Express Messenger is the ideal solution for small businesses that benefit from all the big-business functionality of Mitel's SX-200 ML/EL PBX.

Hospitality

Mitel Express Messenger accommodates the needs of the hospitality market perfectly. Express Messenger integrates easily with most property-management systems and it delivers low-cost voice mail specially designed to handle the call requirements of a host-guest environment.

Unrivalled Integration

Mitel Express Messenger is the only Mitel PBX voice mail system that integrates seamlessly with the SX-200. All the Express Messenger features are available on a single card that quickly and easily plugs into the SX-200 EL or SX-200 ML. And only Mitel voice mail systems offer soft-key integration – now updated to include the record-a-call feature.

*Express Messenger is the affordable,
reliable hospitality solution for Mitel PBXs
that integrate with leading Property
Management Systems.*



Affordable

By delivering all the features on a single card, Mitel is able to offer Express Messenger at a competitive price. With no need for additional hardware – DSP cards, integration cards, chassis and power supply – Express Messenger is an affordable alternative to server-based solutions. Their low-priced voice mail systems for the SX-200 ML/EL may seem attractive initially, but when it comes to integration, ease-of-use and performance, they often can't compare to Express Messenger.

Superior Performance

Express Messenger was designed by Mitel, and so delivers all the unique Mitel features not found on other SX-200 voice mail systems. Only Express Messenger, for example, offers an "in-the-skins" solution, enabling Mitel to deliver unsurpassed digital integration – at an unbeatable price.

Ease-of-Use

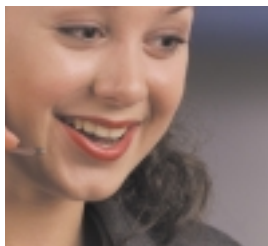
Express Messenger operates through a telephone-user interface, a direct serial connection or a built-in modem with a menu-driven PC application, thereby making it easy to install and administer.



*We're doing things with **voice** too exciting for words*

As leading innovators in real-time enterprise voice communications for over 25 years, we at **Mitel Corporation**

view voice as the most natural human interface and the most important strategic business communications tool. Our next generation IP telephony portfolio, intelligent messaging systems, remote access products, customer interaction solutions, and natural speech recognition technologies are all geared toward delivering tangible business advantage by combining innovation, performance, and reliability.



*Trust your voice to Mitel.
You'll like what you hear.*



www.mitel.com
1-800-648-3579

MITEL CORPORATION
350 Legget Drive
Kanata, Ontario
K2K 2W7 Canada
(613) 592-2122

MITEL INC.
205 Van Buren Street
Suite 400
Herndon, VA
20170-5336 USA
(703) 318-7020

MITEL TELECOM LTD.
Mitel Business Park
Portskewett
CALDICOT
NP26 5YR UK
Sales: 0870 9093030
General: 0870 9092020
Int: +44 (0) 1291 430 000

THIS DOCUMENT IS PROVIDED TO YOU FOR INFORMATIONAL PURPOSES ONLY. The information furnished in this document, believed by Mitel to be accurate as of the date of its publication, is subject to change without notice. Mitel assumes no responsibility for any errors or omissions in this document and shall have no obligation to you as a result of having made this document available to you or based upon the information it contains.

M MITEL (design), SX-200 and SX-2000 are registered trademarks and OnePoint is a trademark of Mitel Corporation. All other products and services are the trademarks of respective holders.

© Copyright 2000, Mitel Corporation. All Rights Reserved. GD3440 Printed in Canada.

PN 9150-951-017-NA, Issue 5