

Call forwarding. Anytime, anywhere.

InnConnect™
CALL FORWARDING

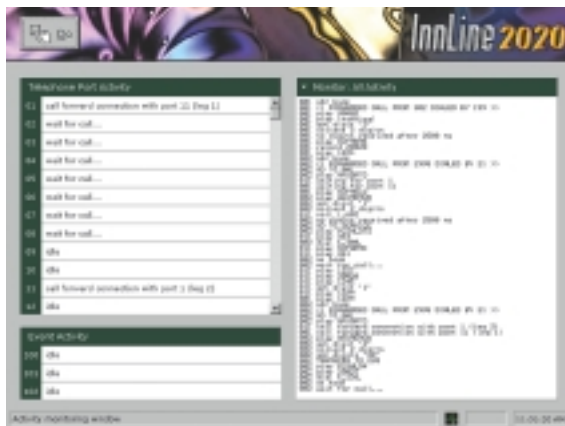
At the restaurant? During a big meeting? Sure. Even at the beach.

InnConnect allows call forwarding to guest cell phones — anytime, anywhere. Guests have the option to take an important call, or send it back to voice mail. It's up to them.

When you add **InnConnect** to your *Innovation* system you'll increase guest satisfaction while retaining a valuable revenue source. Revenues otherwise lost to direct cell phone calls can be tracked and billed back to a guest's folio every time a call is forwarded.

But, **InnConnect** isn't just for guests. Forward calls to cell phones of on-the-move staff members and you'll improve communication and increase your efficiency.

It's all about flexibility. **InnConnect** provides your guests the unique option to take every call — *or not*. Everyone can stay connected.



Call forwarding to cell phones ... anywhere, anytime



InnConnect expands your voice mail services to ... anywhere

FEATURES & SPECIFICATIONS

GUEST USAGE

- Calls reaching voice mail can be forwarded to cell phone
- Guests can configure *InnConnect* through either Automated Guest Services (AGS) or guest tutorial
- After entering cell number, system will provide guests verbal confirmation of number and offer a test call
- Outside callers reaching voice mail will hear this prompt: "To reach this guest on their cell phone, please press 2." The caller then records their name after the tone.

- Guests answering their cell phone will hear the caller's recorded name and this prompt: "To accept this call, press 1. To send the caller back to voice mail, press any other key."

STAFF USAGE

- Same procedure as guest call forwarding, with the following exceptions:
 - Staff must assign the key that callers are to press for call forwarding
 - Staff must verbally prompt caller which key they have assigned in their outgoing greeting

PBX REQUIREMENTS

- Disconnect supervision
- 2 PBX trunk ports per forwarded call

VOICE MAIL REQUIREMENTS

- 2 Dialogic D/41 ESC boards (1 per 4 ports) or 1 Dialogic D82U board per 8 ports
- Minimum of 8 voice mail ports (each forwarded call requires 2 ports for the duration of the call)
- Specific ports for call forwarding must be configured by installer

We fit inn, so you'll stand out.

www.innovationtw.com • 800-424-6757

1841 Bourbon Road • P.O. Box 183 • Cross Plains, WI 53528 USA

